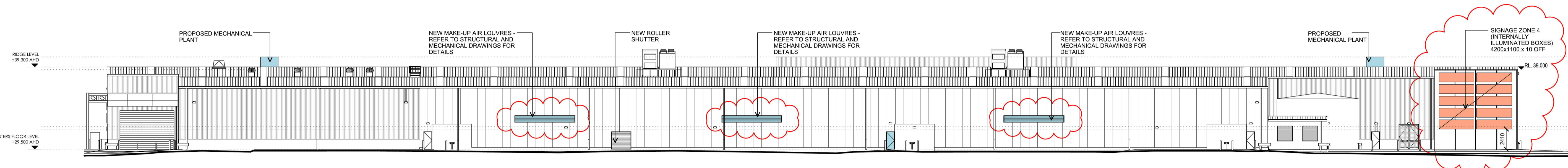
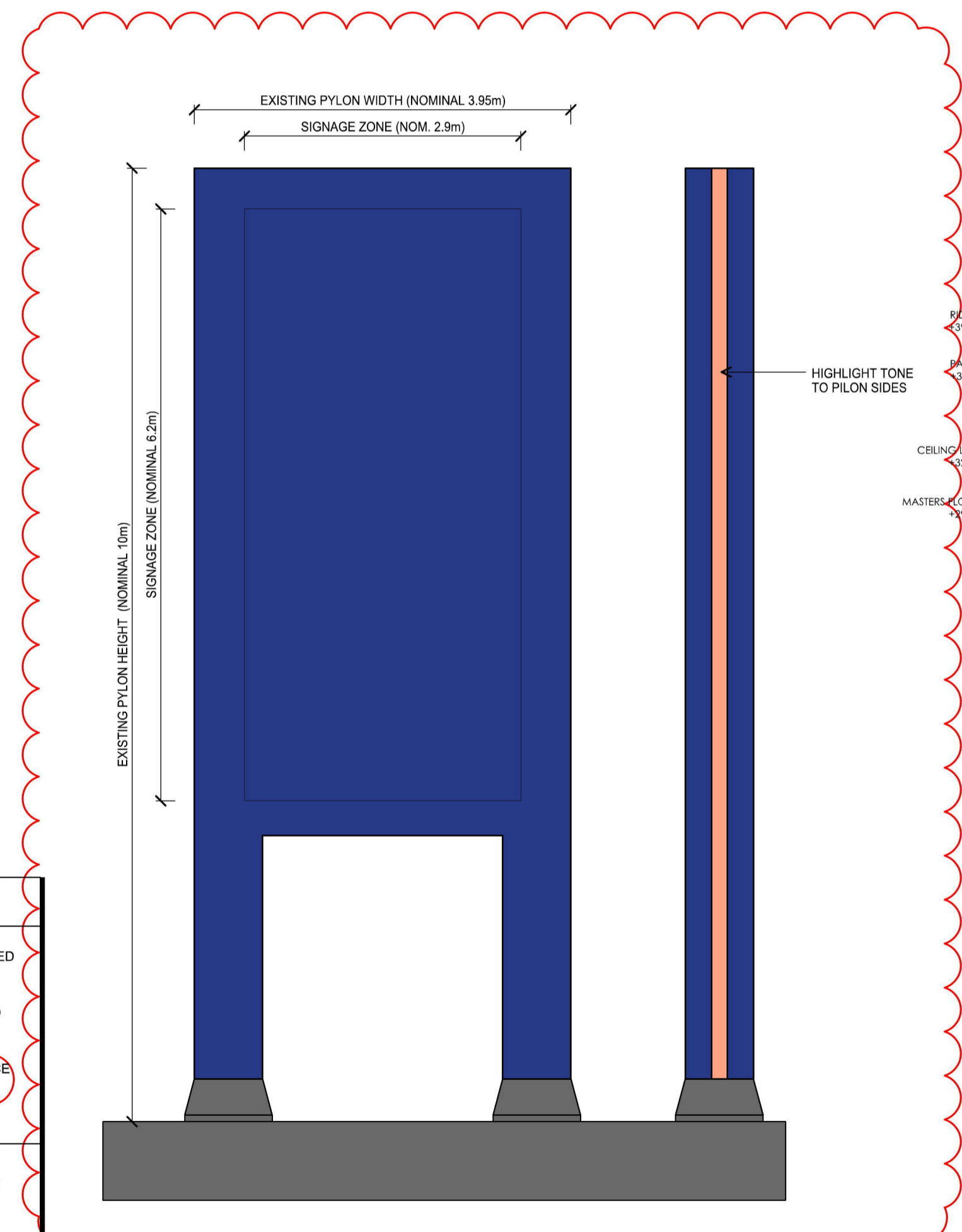


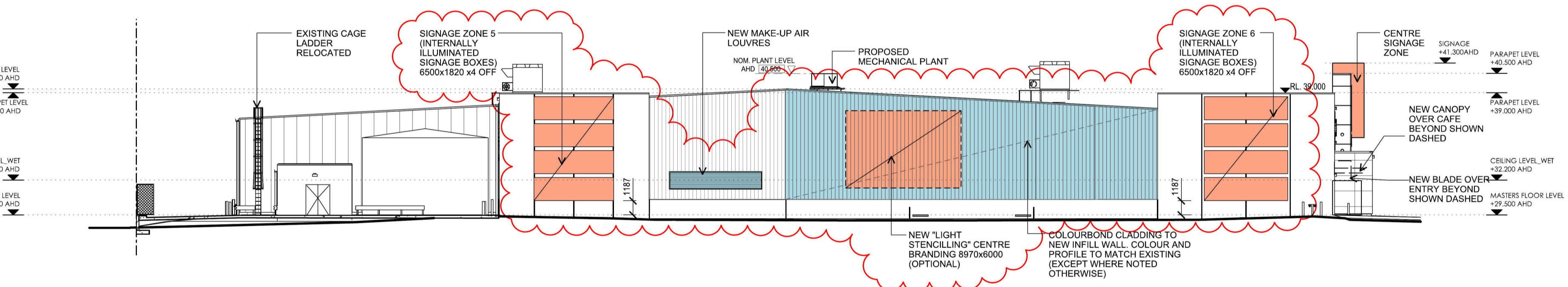
1 **SOUTHWEST ELEVATION**  
20001 1:250



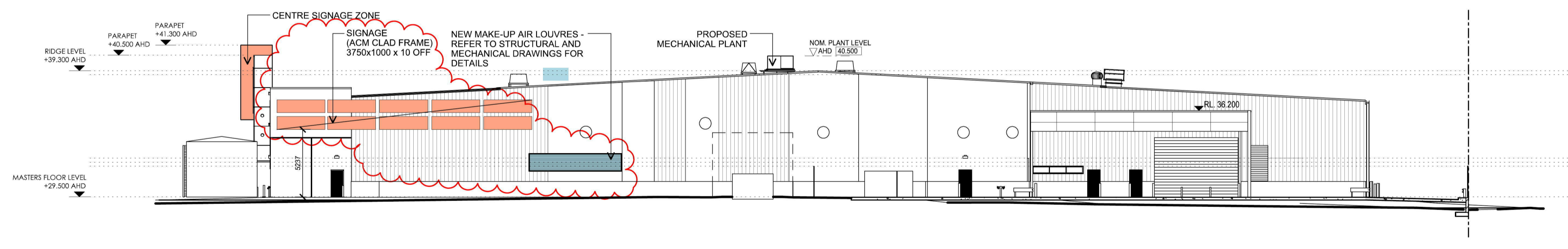
2 **NORTHEAST ELEVATION**  
20001 1:250



5 **PYLON ELEVATION**  
1:50



3 **NORTHWEST ELEVATION**  
20001 1:250



4 **SOUTHEAST ELEVATION**  
20001 1:250

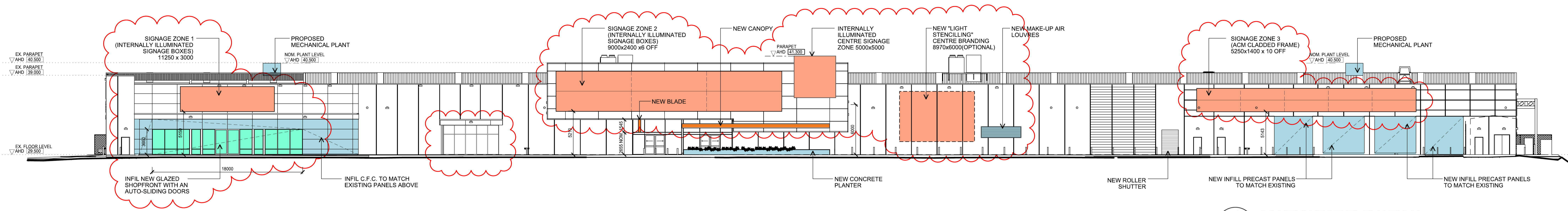
**NOTES**

- BUILDING FACADE MATERIALS & FINISHES TO BE RETAINED OR MADE GOOD TO MATCH EXISTING UNLESS OTHERWISE NOTED ON DRAWINGS.
- EXISTING 'MASTERS' SIGNAGE ON BUILDING FACADES TO BE REMOVED AND WALLS MADE GOOD TO MATCH EXISTING MATERIALS & FINISHES.
- INTERNALLY ILLUMINATED BOXES: 150 mm DEEP FLEXIFACE LIGHT BOXES

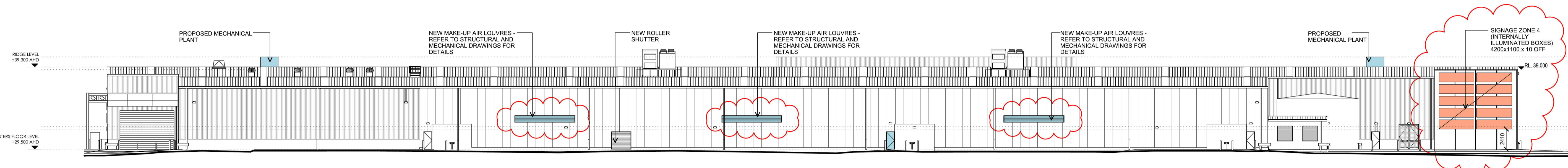
HIGHLIGHT TONE TO INDICATE ALTERATIONS TO BUILDING FACADE

HIGHLIGHT TONE TO INDICATE NEW SIGNAGE ZONE

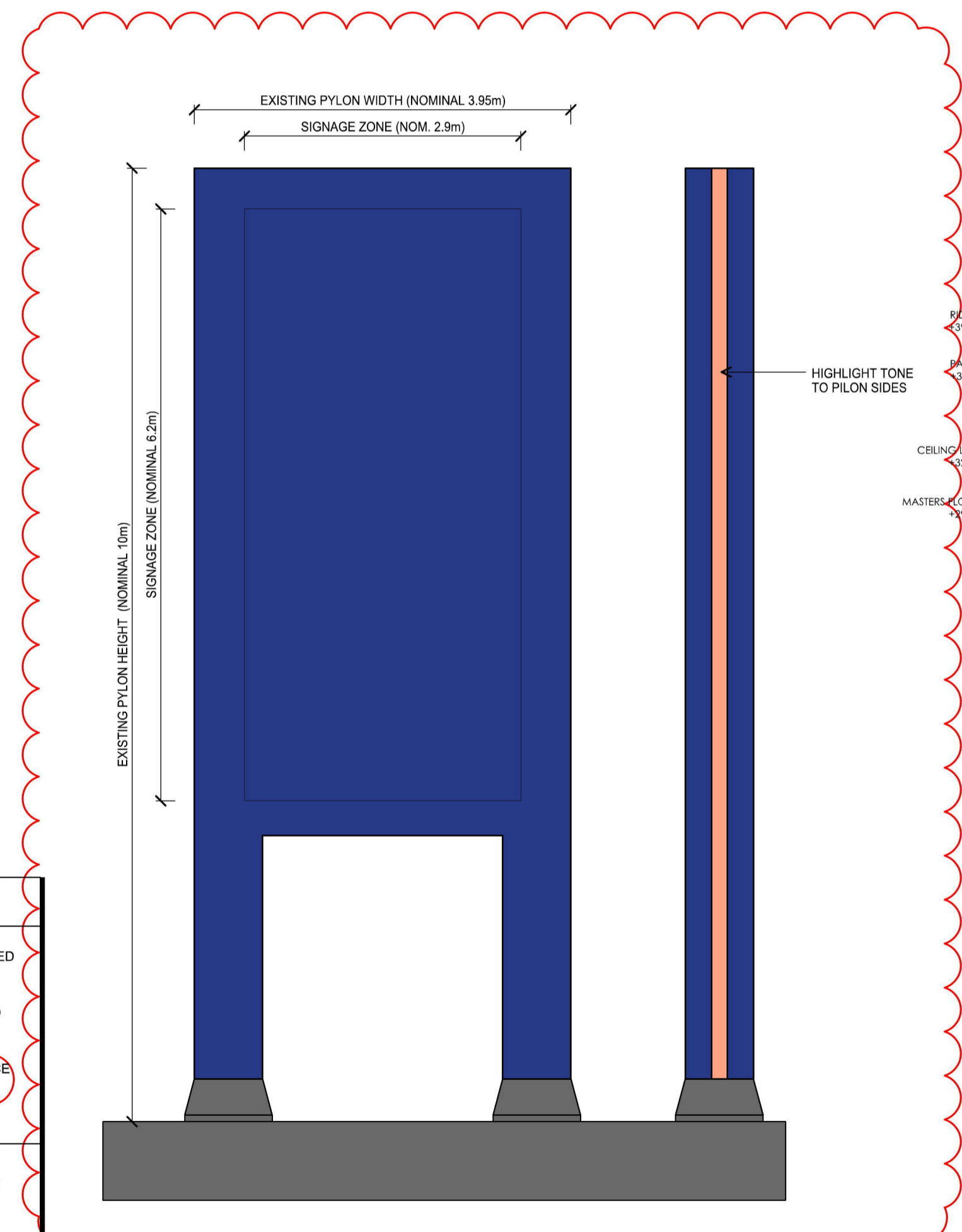




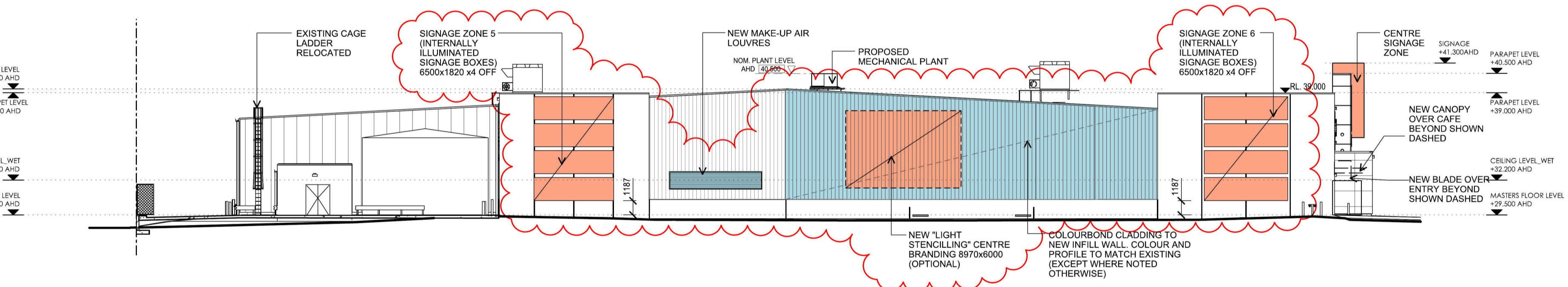
1 **SOUTHWEST ELEVATION**  
20001 1:250



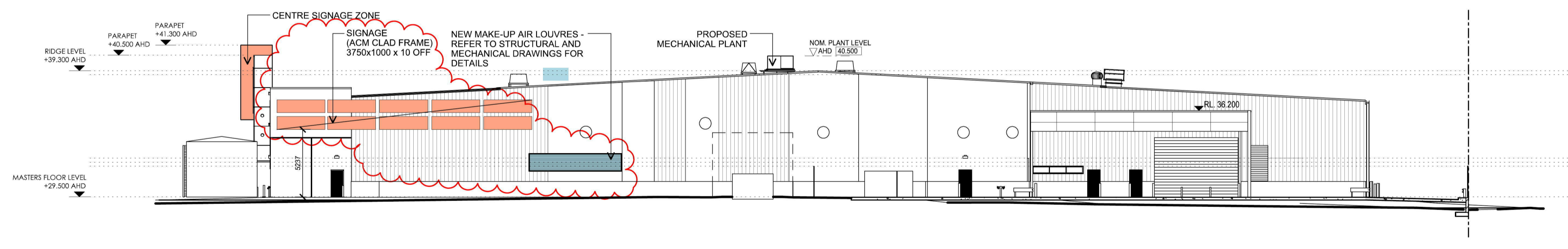
2 **NORTHEAST ELEVATION**  
20001 1:250



5 **PYLON ELEVATION**  
1:50



3 **NORTHWEST ELEVATION**  
20001 1:250



4 **SOUTHEAST ELEVATION**  
20001 1:250

**NOTES**

- BUILDING FACADE MATERIALS & FINISHES TO BE RETAINED OR MADE GOOD TO MATCH EXISTING UNLESS OTHERWISE NOTED ON DRAWINGS.
- EXISTING 'MASTERS' SIGNAGE ON BUILDING FACADES TO BE REMOVED AND WALLS MADE GOOD TO MATCH EXISTING MATERIALS & FINISHES.
- INTERNALLY ILLUMINATED BOXES: 150 mm DEEP FLEXIFACE LIGHT BOXES

HIGHLIGHT TONE TO INDICATE ALTERATIONS TO BUILDING FACADE

HIGHLIGHT TONE TO INDICATE NEW SIGNAGE ZONE



