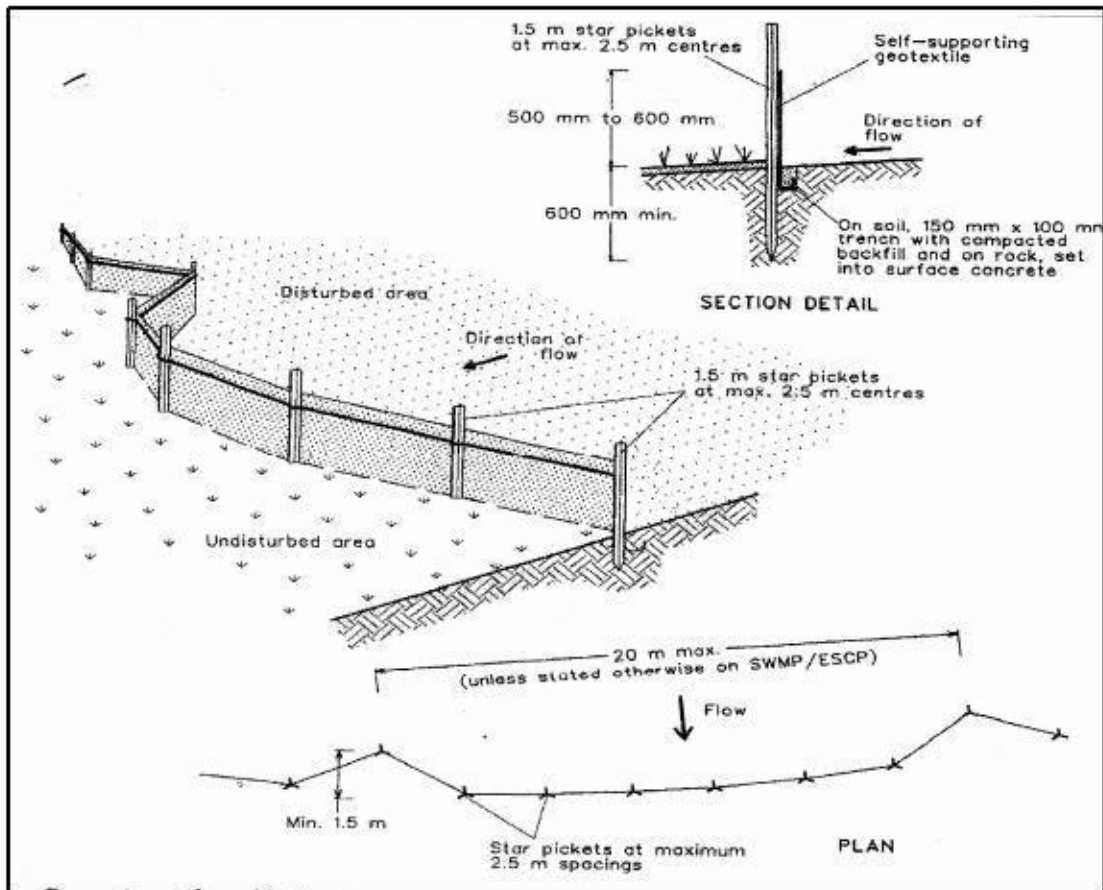


## SEDIMENT FENCE DETAIL –



### Construction Notes:

1. Construct sediment fences as close as possible to being parallel to the contours of the site, but with small returns as shown in the drawing to limit the catchment area of any one section. The catchment area should be small enough to limit waterflow if concentrated at one point to 50 l/sec in the design storm event, usually the 10-year event.
2. Cut a 150mm deep trench along the upslope line of the fence for the bottom of the fabric to be entrenched.
3. Drive a 1.5m long star picket or timber stake into the ground at 2.5m intervals (max) at the downslope edge of the trench. Ensure any star pickets are fitted with safety caps.
4. Fix self-supporting geotextile to the upslope side of the posts ensuring it goes to the base of the trench. Fix the geotextile with wire ties or as recommended by the manufacturer. Only use geotextile specifically produced for sediment fencing.
5. Join sections of fabric at a post with a 150mm overlap.
6. Backfill the trench over the base of the fabric and compact it thoroughly over the geotextile.

**Sediment Fence SD6-8 | (2010)**