

Cap to post, heavy duty PVC
or Galv, colour grey.

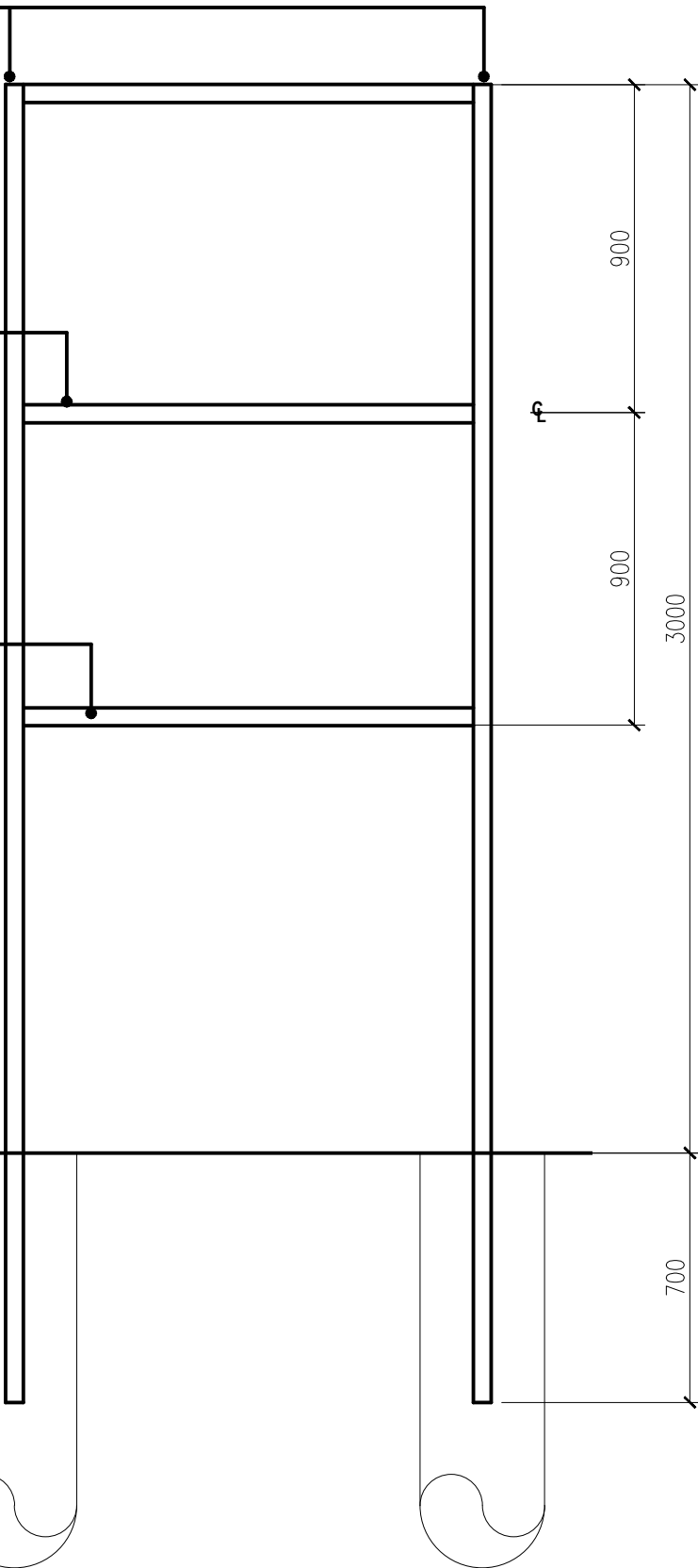
Rail - Galv steel RHS 75x50x6mm,
powdercoat finish.

Rail - Galv steel RHS 75x50x6mm,
powdercoat finish.

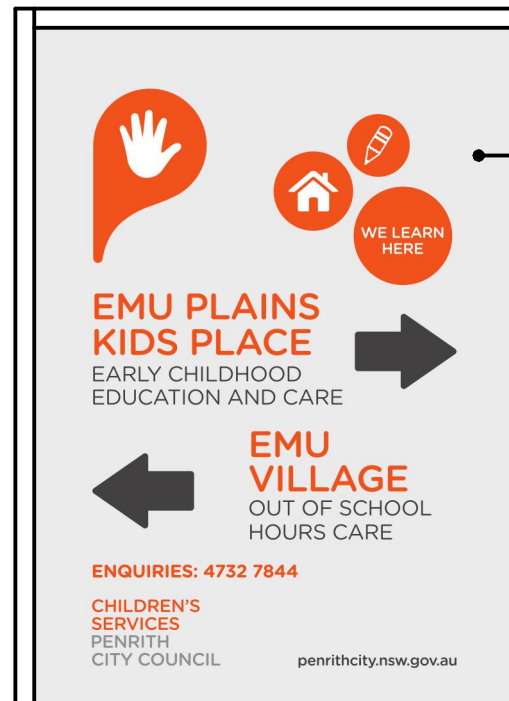
Post - Galv steel RHS 75x50x6mm,
powdercoat finish.

Ground level

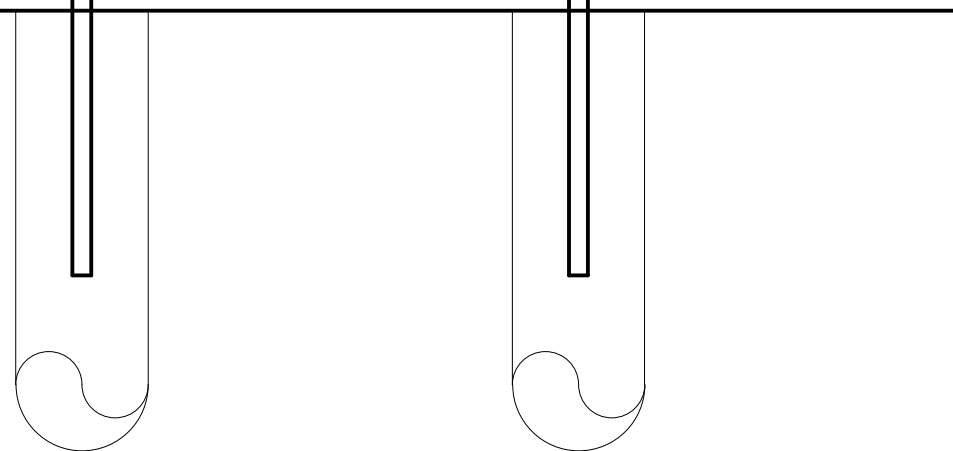
Concrete pier to
Structural Engineer's details



1 ELEVATION - FRAME
1:20



Metal signboard 3mm,
with printing to front face,
grey colour to rear face.



2 ELEVATION- SIGN
1:20

B 17.07.2017 Modify sign incorp heritage RMC
A 14.04.2017 For DA RMC

REV.	DATE	DESCRIPTION	BY
B	17.07.2017	Modify sign incorp heritage	RMC
A	14.04.2017	For DA	RMC

PHASE
FOR DEVELOPMENT APPLICATION

CLIENT
PENRITH CITY COUNCIL
CHILDREN SERVICES

ARCHITECT
PENRITH CITY COUNCIL
Major Projects Department.
601 High Street
PENRITH NSW 2750 Australia
Postal Address:
GPO Box 60
Penrith NSW 2751 Australia
p: (02) 4732 7777
f: (02) 4732 7958
e: penrithc@penrithcity.nsw.gov.au

PROJECT
EMU PLAINS KIDS PLACE
4 LAWSON STREET , EMU PLAINS
Lot 7042 / DP 93967

TITLE
ELEVATION

SCALE (A3)	DRAWN	RMC	PROJECT CODE
DATE 03-04-2017	APPROVED		

SHEET NO.
MP-A-1705- 02 REV[B]

