

# 16 CHAPMAN STREET, WERRINGTON STREET TREE MASTERPLAN

LANDSCAPE DEVELOPMENT APPLICATION

MARCH 2020

REVISION 01



1. Eastern Park

- Large informal, grassed basin framed by planted embankments to the north-west and east. Embankments and basin base to be planted with formal groups of indigenous and exotic trees.
- Continuous retaining wall to top of the west, north and west embankments with planted beds to soften internal and external embankments.
- Scattered indigenous tree planting with screen planting to adjacent future residential development\*
- Continuous access path around basin\* (2.5m)
- Small gathering area along the western boundary with shelters, picnic tables, BBQ's and seating
- Two Fitness stations.
- Bio-retention area planted with sedges and rushes.
- Entry statement to north west corner utilizing the exposed stone retaining wall including signage and low feature planting.
- Possible Interpretive sculpture to basin (heritage overlay)
- Formal grove of deciduous/fruit trees - Orchard heritage overlay
- Accessible 1:20 ramp down to basin to turfed passive zone
- Gross pollutant trap with vehicular access from road
- Native trees within basin including water tolerant species - Eucalyptus Tereticornis and Eucalyptus Moluccana
- Maintenance Access to basin
- Apartment residents access path

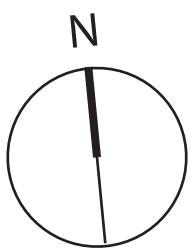
2. Central Park

- Additional/supplemental plantings for the re-establishment and enhancement of endemic Shale Plain Woodland vegetation\*
- Stormwater detention and bio-retention basins
- Access path through site\* (2.5m)
- Scattered indigenous trees in native grasses create filtered screen to adjacent residential with fuel managed APZ\*
- Informal grassed play area with scattered local trees\*
- Children's playground\* including climbing structures, swings, slides and sensory play elements.
- Large sheltered picnic area
- Multi-play area including half court, table tennis and fitness station.
- Raised platforms and turfed mounds for social gathering.
- 'Brooklands Speedway' - Children's learn to ride bicycle circuit
- Picnic areas
- Residents access path
- Maintenance access to basin
- Rural Fire Service vehicle access path outside the Display Centre
- Low grass planting to RFS maintain access path, within fuel managed 16m APZ zone

3. VMP Area for Protection and Rehabilitation

4. E2 Zone for Protection and Rehabilitation

\*Listed items within Penrith DCP 2014, pg. 67





Landscape Circulation Legend

- Shareways
- Through Site Links
- Street Verges
- Private Lot access
- RFS Access
- Maintenance Access
- Proposed Bush Track





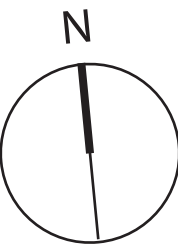


Tree Selection Legend

- Magnolia grandiflora*
- Waterhousea floribunda* "Green Avenue"
- Sapium sebiferum*
- Platanus x acerifolia*
- Pyrus calleryana* 'Chanticleer'
- Fraxinus pennsylvanica*
- Lophostemon confertus*
- E. reticulatus, E. eumundi, Backhousia myrtifolia, Camellia sasanqua*
- Ulmus parvifolia*
- E. tereticornis*

Street Tree Master Plan

16 Chapman Street, Werrington - Street Tree Masterplan Report



DATE	PROJECT NO.	REVISION	DWG NO.
05/03/2020	2519036	01	SK-4

0 10 20 30 40 50M

SCALE 1:1250 @ A1



BOTANICAL NAME	COMMON NAME	HEIGHT	SPACING	SIZE
SHADE TOLERANT TREES TO EMBANKMENT OF EAST-WEST CONNECTOR ROAD				
<i>Backhousia myrtifolia</i>	Grey Myrtle	3m	As Shown	100L
<i>Camellia sasanqua</i>	Camellia	5m	As Shown	100L
<i>Elaeocarpus edmundii</i>	Elaeocarpus	8m	As Shown	100L
<i>Elaeocarpus reticulatus</i>	Blueberry Ash	15m	As Shown	100L
STREET TREES				
<i>Fraxinus pennsylvania</i>	Green Ash	13m	As Shown	100L
<i>Lophostemon confertus</i>	Brush Box	25m	As Shown	100L
<i>Platanus x acerifolia</i>	London Plane	14m	As Shown	100L
<i>Sapium sebiferum</i>	Chinese Tallow	8m	As Shown	100L
<i>Magnolia grandiflora</i>	Magnolia	12m	As Shown	100L
<i>Ulmus parvifolia</i>	Chinese Elm	13m	As Shown	100L
<i>Waterhousia floribunda</i>	Weeping Lily Pilly	7m	As Shown	100L
<i>Eucalyptus tereticornis</i>	Forest Red Gum	30m	As shown	100L

SHADE TOLERANT TREES



*Backhousia myrtifolia*



*Camellia sasanqua*



*Elaeocarpus eumundi*

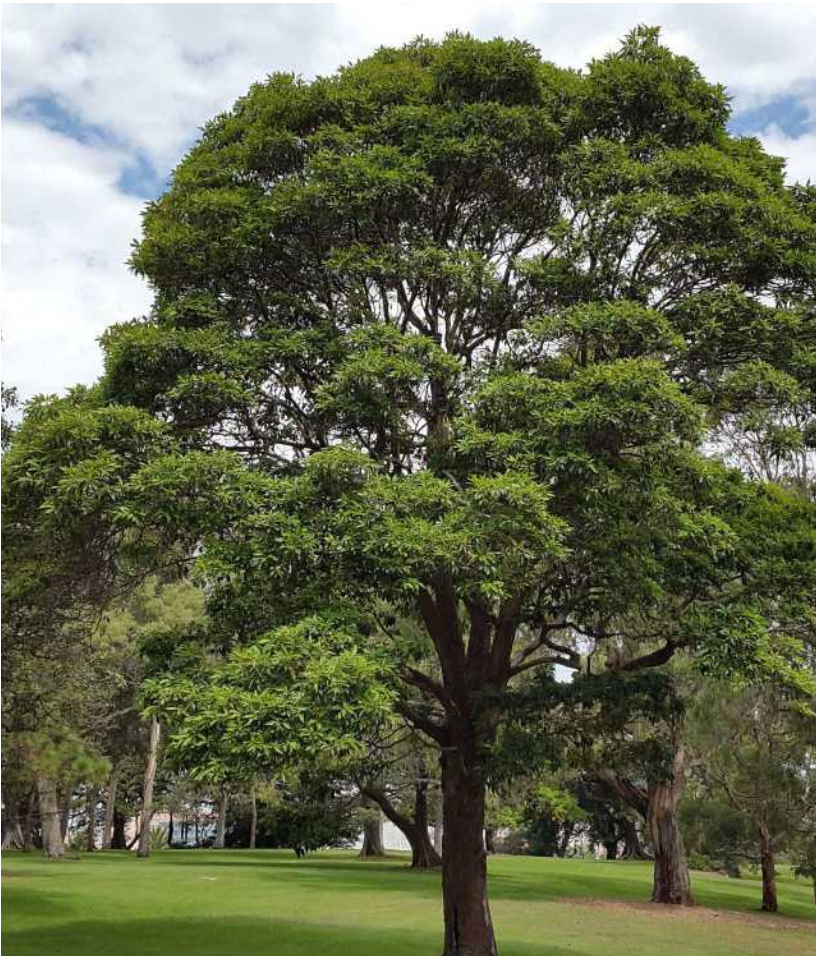


*Elaeocarpus reticulatus*

STREET TREES



*Fraxinus pennsylvania*



*Lophostemon confertus*



*Platanus x acerifolia*



*Sapium sebiferum*



*Magnolia grandiflora*



*Ulmus parvifolia*

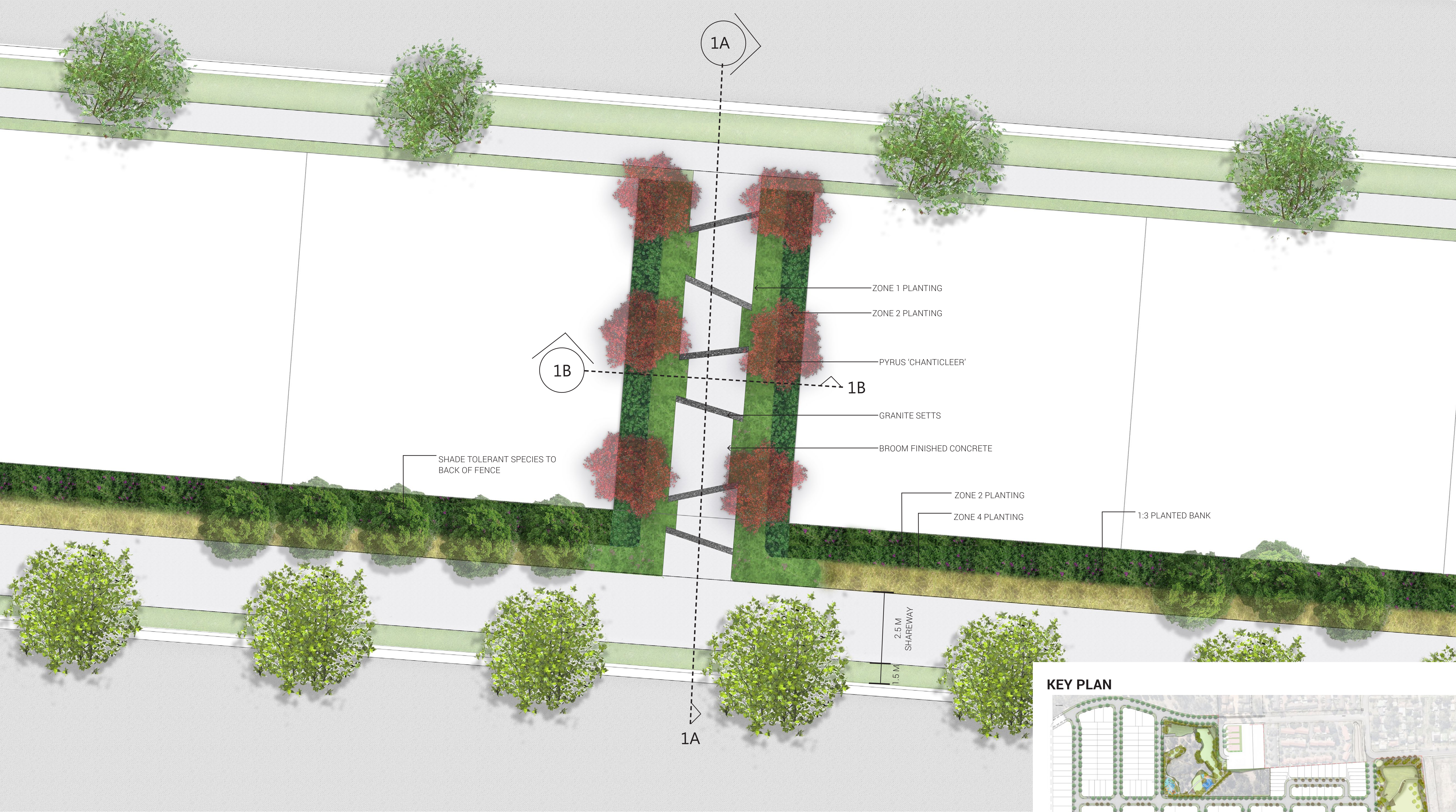


*Waterhousea floribunda* "Green Avenue"



*Eucalyptus tereticornis*

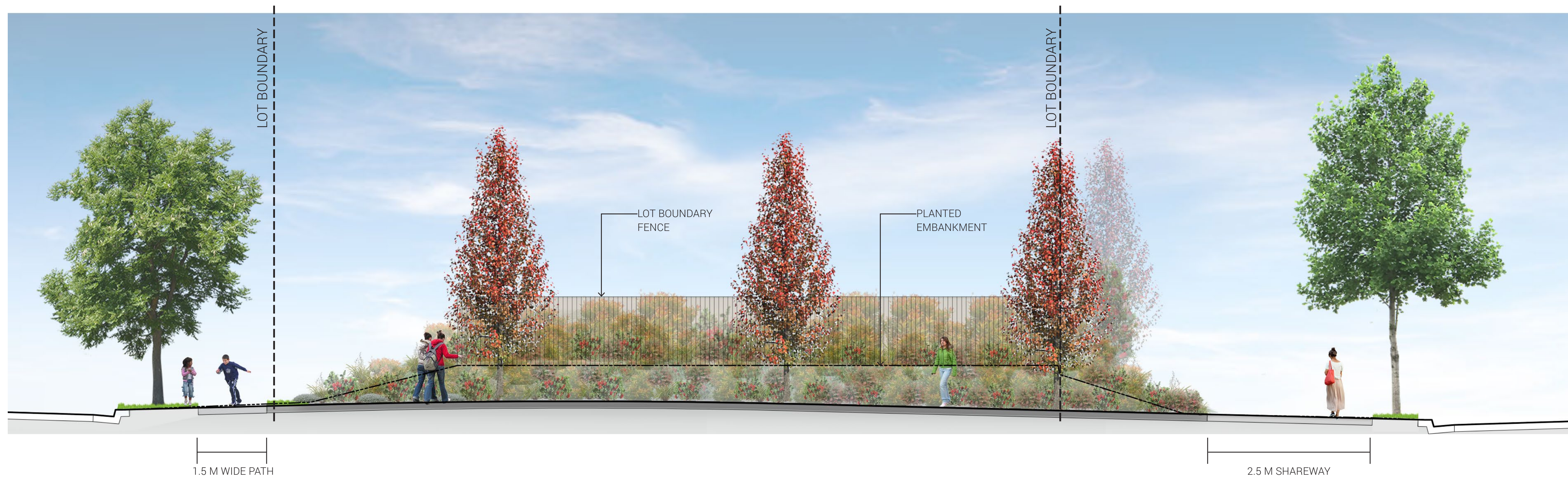




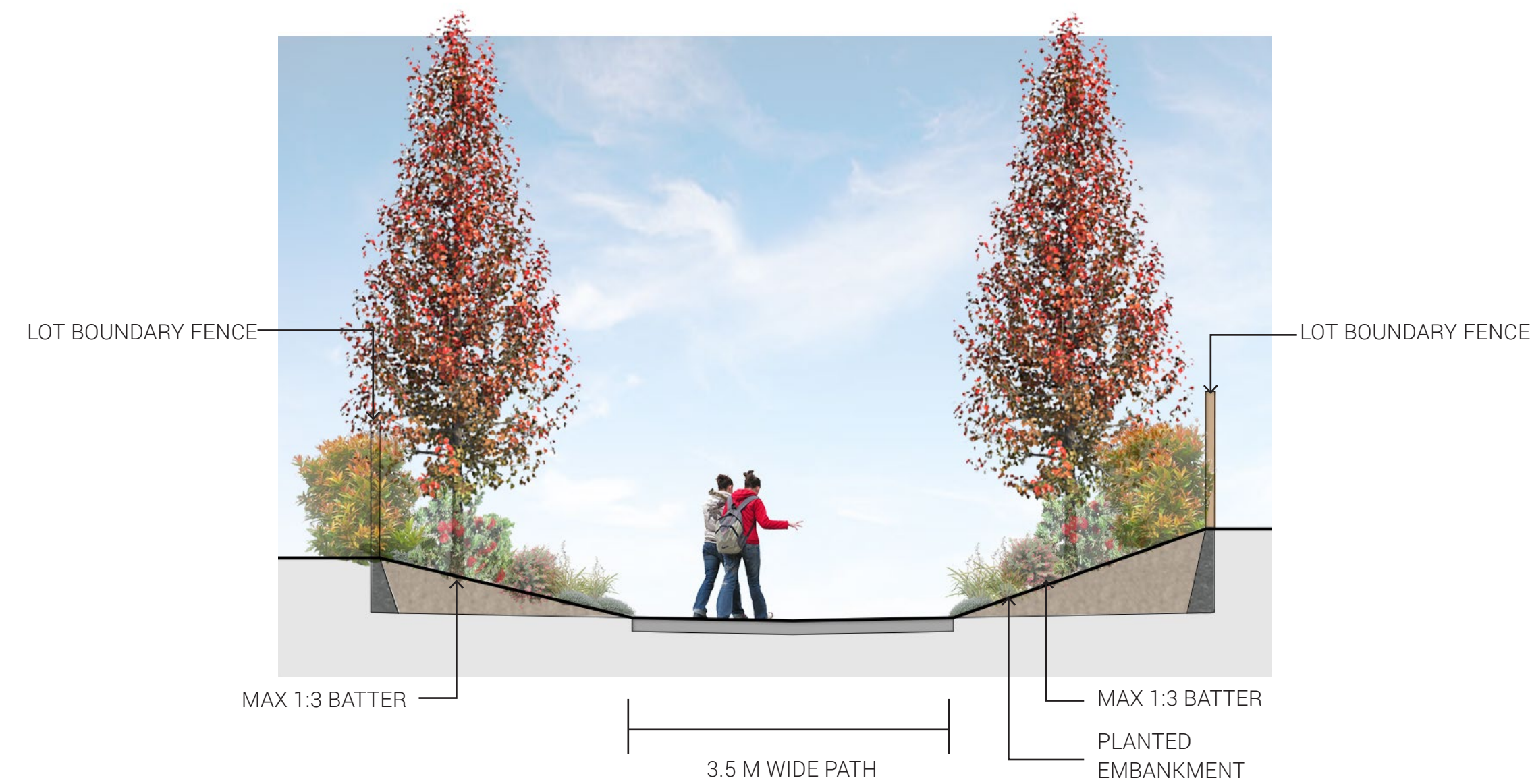
KEY PLAN





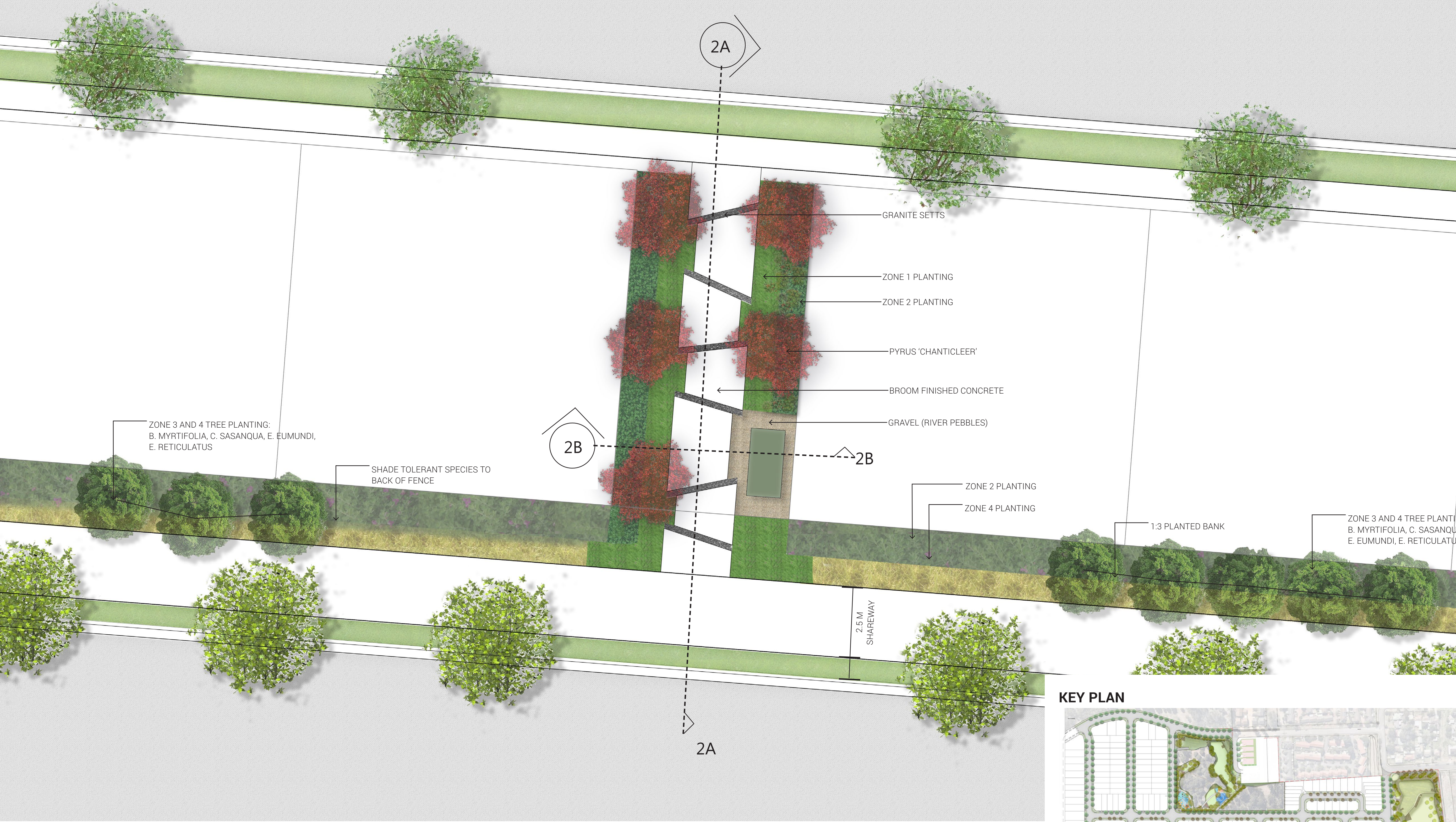


SECTION 1A



SECTION 1B





KEY PLAN









ZONE 1



**Lomandra longifolia 'Tanika'**  
Tanika



**Westringia fruticosa 'Zena'**  
Coastal Rosemary



**Chrysocephalum apiculatum**  
Yellow buttons



**Hibbertia scandens**  
Snake vine



**Anigozanthos 'Bush Bonanza'**  
Kangaroo Paw



**Pennisetum alopecuroides 'Nafray'**  
Swamp Foxtail



**Myoporum parvifolium 'Yareena'**  
Yareena



**Philodendron xanadu**  
Xanadu

ZONE 2



**Callistemon viminalis 'Slim'**  
Slim



**Doryanthes excelsa**  
Gymea Lily



**Melaleuca 'Claret Tops'**  
Claret Tops



**Syzygium 'Cascade'**  
Cascade Lilly Pilly

ZONE 3



**Murraya paniculata**  
Orange Jasmine



**Syzygium 'Cascade'**  
Cascade Lilly Pilly



**Doryanthes excelsa**  
Gymea Lily

ZONE 4



**Dianella 'Little Jess'**  
Blue Flax Lily Little Jess



**Liriope muscari 'Just right'**  
Turf Lilly



**Dietes grandiflora**  
Wild Iris



**Philodendron xanadu**  
Xanadu

TREE PLANTING ZONE 3 AND 4



*Backhousia myrtifolia*



*Camellia sasanqua*



*Elaeocarpus eumundi*



*Elaeocarpus reticulatus*

TREE PLANTING ZONE 1 AND 2



*Pyrus calleryana 'Chanticleer'*





