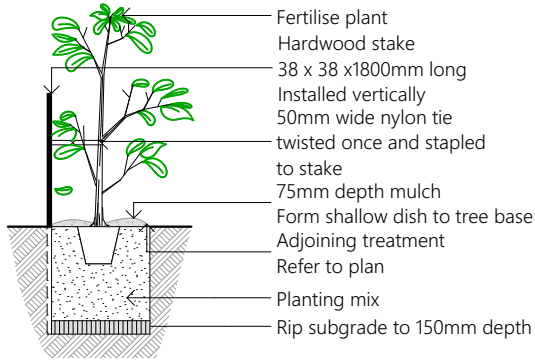
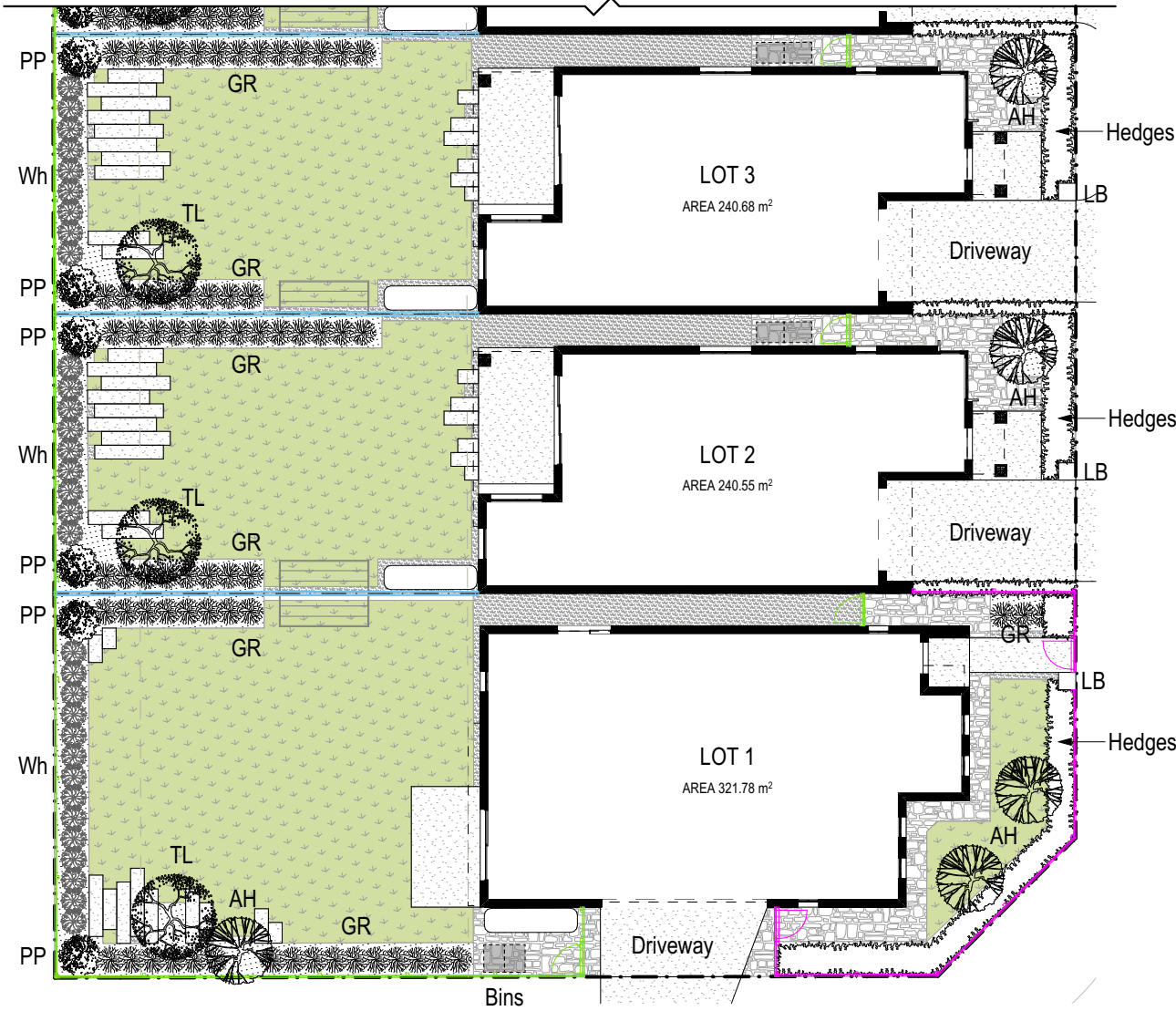
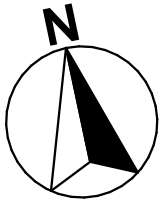


| Landscape Schedule | | |
|--------------------|---|----------|
| <div>LB</div> | Letterbox | By CH |
| <div></div> | Washed pebbles or similar | By CH |
| <div></div> | Stepping Stones or similar | By CH |
| <div></div> | Proposed turf area/s | By CH |
| <div></div> | Mulch area or similar | By CH |
| <div></div> | Concrete stepping stones (as required) | By CH |
| <div></div> | Proposed driveway and path | By CH |
| <div></div> | Approx. position of clothes line | By CH |
| <div></div> | Approx. position of proposed fencing | By Owner |
| <div></div> | Approx. position of garbage bins | By Owner |
| <div></div> | Approx. position of rainwater tank (3,000L) | By CH |

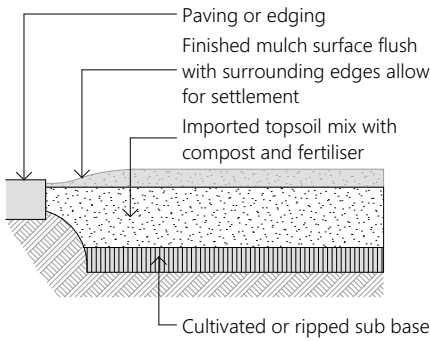
| Native-indigenous planting | | | | |
|----------------------------|--------------------------|----------------|-----------------------|----------|
| Symbol | Latin name | Common name | Mature height x width | Pot size |
| <div></div> | Westringia hybrid | Blue Gem | 0.80m(h) x 0.80(w) | 5 Ltr. |
| <div></div> | Grevillea rosmarinifolia | Crimson Villea | 0.80m(h) x 0.80(w) | 5 Ltr. |
| <div></div> | Pultenaea parviflora | North Rothbury | 1.00m - 1.80m(h) | 5 Ltr. |
| <div></div> | Tristaniopsis laurina | Water Gum | 6.50m(h) x 5.00m(w) | 25 Ltr. |
| <div></div> | Angophora hispida | Apple Gum | 5.00m(h) x 4.00m(w) | 25 Ltr. |
| <div></div> | Garden hedge/s | | | |

Notes:

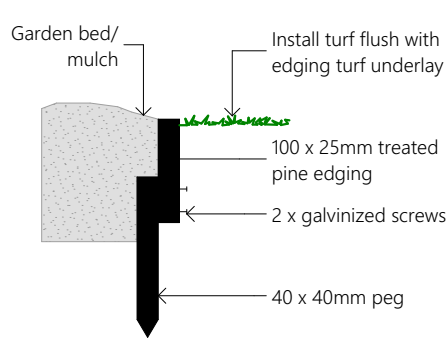
- It is the owners responsibility to ensure all additional landscaping including schedule of planting and maintenance complies with local government requirements and guidelines.



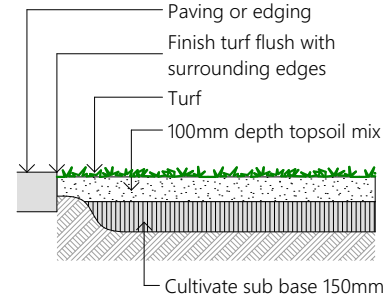
15-45 Litre tree planting detail



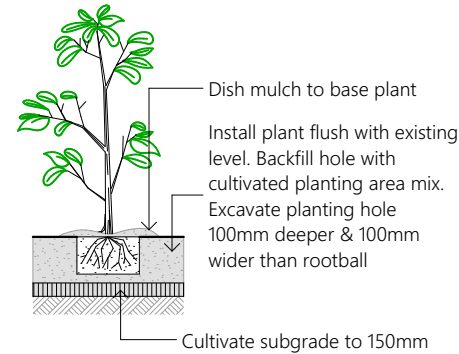
Ground preparation
Planting area using imported soil




Typical edging detail



Ground preparation
Grassed area; turf using imported topsoil



Planting in garden beds

| | | | | | | |
|--|--|--|--|---|--------------------|-----------------------|
|  <div>Creation Homes Pty Ltd Suite 3, 46 Brookhollow Avenue, Baulkham Hills NSW, 2153. (P) 02 8806 7600 (F) 02 8806 7699</div> <div>© The plan & design of this house is owned by Creation Homes & under the copyright act of 1968 cannot be reproduced in any shape or form without prior written authorisation. Any doing so will be liable for action under the act.</div> | CONSTRUCTION ISSUE A | | LANDSCAPE PLAN | CUSTOM - CONTEMPORARY | SHEET: 01 OF 02 | SCALE: 1:200 |
| | CLIENT: CREATION HOMES NSW JOB N°: 3678 PCA: DM CERTIFIERS PH: 02 9473 5488 | | JOB ADDRESS: LOT 01-03 KINGS CENTRAL - STAGE 2C WERRINGTON, NSW | COUNCIL: Werrington SOIL CLASS: 'H1' Class WIND CLASS: N2 | DRAWN BY: SC | DATE: 24 Feb 2022 |
| | | | | | VERSION No. 01 | CONSTRUCTION No. A |

